



PARMAR STEEL

(AN ISO 9001 : 2015 CERTIFIED COMPANY)



- SHEET, PLATE & COILS
- PIPES & TUBES
- BUTTWELD FITTING
- FORGED FITTING
- ABRASION RESISTANT STEEL PLATE
- FLANGES
- FASTENERS
- VALVES



www.parmarsteel.com



www.parmarsteelalloys.com



PARMAR STEEL

(AN ISO 9001 : 2015 CERTIFIED COMPANY)

Company Profile

Established in year 2007, at Mumbai, Maharashtra, India, we “(PARMAR STEEL)” is one of the leading and well recognized name in the filed of manufacturing, exporting, stockist and supplying of **Industrial Piping and Fitting Products**. With the offered solutions comprising Valve Fittings, Instrumentation tube fittings, Flanges and other comprehensive range of piping and fitting products, we ensure that these are precision designed so as to meet the operational needs of different industrial units.

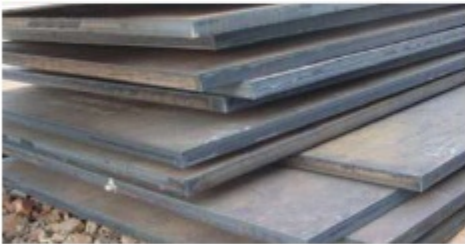
Our business operations are well handled by experienced management that guides us in the flawless handling of involved operations. The dedicated team under the visionary guides us in the flawless handling of involved operations. The dedicated team the visionary guidance provided meets up tp the requirements of Carbon Steel, Stainless Steel, Alloy Steel, Pipes, Tubes, Plate, Pipe Fittings, Forge Fitting, Flanges, Fasteners, Ferrous & Non Ferrous Fittings, En Series Rod Perforated Sheet Dairy Fittings, and all Ferrous & Non ferrous Metals among others. Here, the rich experience gained by us and support of well developed infrastructure facilities also supports our aim to successfully match up with the ferrous & non ferrous piping demands of our customers.

Quality Policy

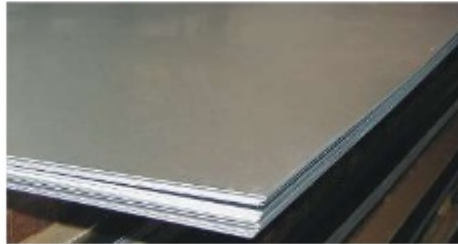
Our quality policy ensure the continuous improvement in the effectiveness of quality management system (QMS), sets quality objectives and work plans. Being an ISO 9001:2015 and ISO 14001:2004 Certified company, we are committed towards the up gradation of the capabilities of technical and administrative staff through formal training and continuous technical quality awareness. Our quality policy states :

- Make commitments we fully understand and believe we can meet
- Meet all commitments to customers on time
- We are Committed to meet our Customer Needs Till there Satisfaction.

Special Grade Plates



SA 516 Gr. 50, 60, 70



SMO 254



WEAR / TISCRAL /JSP HARD PLATE

Certificates



PIPES & TUBES



Stainless Steel : ASTM A312 TP 304 / 304L / 304H / 316 / 316L / 316H / 317 / 317L / 321 / 321H / 310 / 347 / 347H / 904L etc.

Carbon Steel : ASTM A53 GR. B / A106 GR. B / API 5L GR. B / API 5L GR. X42 / 46 / 52 / 56 / 60 / 65 / 70 / A333 GR. 3 / GR. 6 etc.

Mild Steel : IS 1239 / IS 3589

Alloy Steel : ASTM A335 GR. P1 / P5 / P9 / P11 / P22 / P91 etc.

Others : Duplex, Super Duplex, Inconel, Monel, Hastelloy, Nickel, Alloy 20, 254 SMO, Copper, Brass, Bronze, Titanium, Tantalum, Bismuth, Aluminium, High Speed Steel, Zinc, Lead, etc.

Types : Round, Square, Rectangular. | **Wall Thickness** : Sch. 5S to Sch. XXS

SHEETS, PLATES & COILS

Stainless Steel Coils, Sheets & Plates as per ASTM A 240 Gr. TP 304, 304L, 304LN, 309, 309S, 309H, 310S, 310H, 316, 316L, 316H, 316LN, 316TI, 317, 317L, 321, 321H, 347, 347H, 348, 348H, 409, 410, 420, 430

Alloy Steel Plates as per ASTM A 387 Gr. 2, 5, 9, 11, 12 & 22 in class 1 & 2, ASTM A 204, Gr. A & B, DIN 17175 Gr. 15Mo3 & 16Mo3 with IBR Test Certificate.

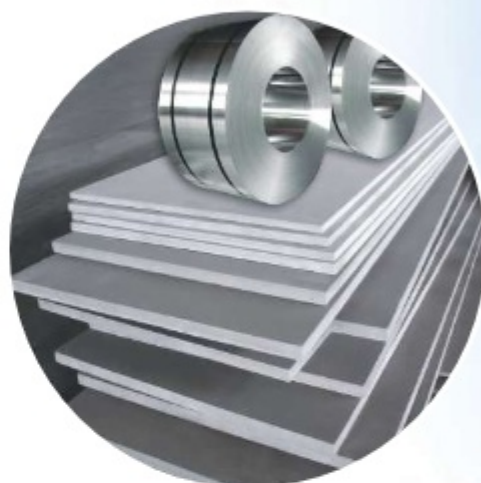
NM/ABRAX PLATE- NM 400/ABRAX 400/ROCK STAR/ROCK HARD 400/JFE400

Carbon Steel / Boiler Quality Plates as per IS 2062 Gr. A, B & C, IS 2002 Gr. 1 & 2, ASTM A516 Gr. 60 & 70 ASTM A515 Gr. 70.

High Nickel Alloy : Monel, Nickel, Inconel, Hastalloy, Copper, Brass, Bronze, Brass, Titanium, Tantalum, Bismuth, Aluminium, High Speed Steel, Zinc, Lead, etc.

Duplex, Super Duplex Steel & SMO Plate : UNS S31803, UNS S32750, UNS S32760, 904L / SMO 254, Alloy 20

Types : Sheet, Plates, Strips, etc.



VALVES



Material : Stainless Steel / Duplex / Super Duplex / Nickel Alloy / Carbon Steel / Alloy Steel

Standard : ASTM / ASME / ANSI / AISI / DIN

Grade : WCB, WC1, WC6, WC9, LCB, LCC, LC3, C5, C12, CF8, CF8M, CF3, CF3M, CF8C, CN7M, CD4MCu, Hastelloy, Inconel, 304L, 316L, 2205, 2507 etc.

Types : Gate Valve, Ball Valve, Globe Valve, Butterfly Valve, Check Valve, Cryogenic Valve

Size : 1/2" to 60"

Class : 150#, 300#, 600#, 800#, 900#, 1500# & 2500#.

ROUND BARS

Stainless Steel Bar : ASTM A-479, A 182 F 304/304H/304L, 316/316L/316TI, 309, 310, 317L, 321, 347, 409, 410, 420, 430, 440 (A, B, C) 446, 904L, etc.

Duplex Steel Bar : A 182 F51, F53, F55

EN Series Bar : EN8, EN9, EN 19, EN24,

Carbon Steel Bar : A 105, LF2, 4140 MOD, 4340 MOD

Alloy Steel Bar : ASTM A -182 F11, F12, F22, FF5, F9, F91

Cu-Ni Bar : C70660 (90:10) C71500 (70:30), C71640

Nickel Bar / Monel Bar : UNS N02200, N02201, UNS N04400, N05500

Inconel Bar : UNS N06600, N06601, N06625, N08800, N08810, UNS N08825, UNSN09925, UNS N07718

Types : Round, Square, Hex (A/F), Rectangle





PARMAR STEEL

(AN ISO 9001 : 2015 CERTIFIED COMPANY)

MANUFACTURING

BUTT WELD / SOCKET WELD / THREADED FITTINGS / FLANGES & FASTENERS



This is to introduce ourselves as the most reliable outsourcing partners for manufacturing of buttwelding pipe fittings, socket weld, pipe fittings, flanges & tubular components in all kinds of steel. Our panel of experienced manufacturers ensures excellent quality fittings meeting exacting standards of National & International quality.

These Pipe Fitting are manufactured from ferrous metals such as Carbon Steel, Alloy Steel, Low Temperature Carbon Steel & Stainless Steel. Both Seamless and E.R.W. Pipe Fittings are Produced by our special manufacturing process involving either hot or cold forming. We are fully capable of manufacturing Pipe fittings made to customer's specifications in terms of type, dimensions, material & quantity under any third party inspection.

These Pipe Fittings are perfectly round, rugged, leak proof, corrosion resistant (Where ever required), meeting all the requirements to ASA / ASTM / BS / DIN / ISI codes. These quality fittings extend the life of piping systems, facilitate direct pipe welding, permit compact installations & reduce the space necessary for installing a piping network.

FACILITIES

- Hydraulic Press
- Oil Fired Furnace with Temp. Recorder
- Universal Testing Machine
- Hardness Tester
- Chemical laboratory
- Hacksaw cutting Machines
- Lathe Machines
- Plate Rolling Machines
- Grinding Machines
- Drilling Machines
- Motor Generator Welding Sets (Advani)
- AC Welding Sets (Advani)
- DC Rectifier Welding Sets (Advani)
- Computer & Software

BUTT-WELD FITTINGS



Stainless Steel : ASTM A403 WP 304/ 304L/ 304H/316/ 316L/ 317/ 317L/ 321/ 310/ 347/904L etc.

Carbon Steel : ASTM A234 WPB/A420 WPL3/A420 WPL6

Mild Steel : IS 1239 Part 2 / IS 3589

Alloy Steel : ASTM A234 WP1/ WP5/ WP9/ WP11/ WP22/ WP91 etc.

Duplex & Super Duplex Steel : UNS S31803, UNS S32750, UNS S32760, 904L, Alloy 20

Others : Monel, Nickel, Inconel, Hastalloy, Copper, Brass, Bronze, Titanium, Tantalum, Bismuth, Aluminium, High Speed Steel, Zinc, Lead, etc.

Types : Elbow, Tee, Reducer, Return Bends, Stub-Ends, Cap, Collar, Cross, Insert etc.

Size : 1/4" NB TO 32" NB. (Seamless & Welded)

Wall Thickness : Sch. 5S To Sch. XXS.

SOCKET-WELD FITTINGS

Stainless Steel : ASTM A182 F304/ 304L/ 304H/ 316/ 316L/ 317/ 317L/ 321/310/ 347/ 904L etc.

Carbon Steel : ASTM A105 / A694 F42/46/ 52/56/ 60/ 65/70 / A350 LF3/ A350 LF2.

Alloy Steel : ASTM A182 F1/ F5/ F9/ F11/ F22/ F91 etc.

Types : Elbow, Tee, Union, Cross, Coupling, Cap, Bushing, Plug, Swage Nipple, Welding Boss, Hexagon Nipple, Barrel Nipple, Welding Nipple, Parallel Nipple, Street Elbow, Hexagon Nut, Hose Nipple, Bend, Adapter, Insert, Weldolet, Elbolet, Sockolet, Thredolet, Nipolet, Letrolet, NPT Fittings,

Size : 1/4" NB TO 4" NB. (Socketweld & Threaded) **Class** : 3000#, 6000#, 9000#.



FLANGES



Stainless Steel : ASTM A182 F304/ 304L/ 304H/ 316/ 316L/ 317/ 317L/ 321/ 310/ 347/ 904L etc.

Carbon Steel : ASTM A105/ A694 F42/ 46/52/56/60/65/ 70/ A350 LF2/ A350LF3, etc.

Alloy Steel : ASTM A182 F1/ F5/ F9/ F11/ F22/ F91 etc.

Others : Monel, Nickel, Inconel, Hastalloy, Copper, Brass, Bronze, Titanium, Tantalum, Bismuth, Aluminium, High Speed Steel, Zinc, Lead etc.

Types : Weldneck, Slipon, Blind, Socket Weld, Lap Joint, Spectacles, Ring Joint, Oriface, Long Weldneck, Deck Flange, etc.

Size : 1/2" NB TO 24" NB.

Class : 150#, 300#, 600#, 900#, 1500# & 2500#.

FASTENERS

Stainless Steel : AISI 302, 304, 304L, 316, 316L, 310, 317, 317L, 321, 347, 410, 420, 904L etc.

Carbon Steel : 4.6, 5.6, 6.6

High Tensile / Alloy Steel : 8.8, 10.9 & 12.9 / 'R', 'S', 'T' Conditions.

Non Ferrous Metal : Copper, Brass, Aluminium, Titanium, Nichrome, Al. Bronze Phosphorous Bronze, etc.

Types : Bolts, Nuts, Washers, Anchor Fasteners, Stud Bolts, Eye Bolt, Stud, Threaded Rod, Cotter Pin, Socket Screw, Fine Fasteners & Spares, Foundation Fasteners, Vane Condition, Galvanized, Phosphetised, Cadmium Plated, Hot Deep Galvanized, Bloodied, Nickel Chrome Plated etc.





PARMAR STEEL

(AN ISO 9001 : 2015 CERTIFIED COMPANY)

S. S. INSTRUMENTAL FERRULE FITTINGS



Union Elbow



Male Elbow



Female Elbow



Union Tee



Male Run Tee



Male Branch Tee



Female Run Tee



Female Branch Tee



Union Cross



45 Deg. Elbow



Tube end Closure



Bulk Head Elbow



Positionable Male Elbow



Nut Ferrule



Union



Reducing Union



Bulkhead Union



Male Connector



Female Connector



Male Adaptor



S.S. FORGED BLIND
HEX TEE



S.S. FORGED BLIND
HEX ELBOW



S.S. ELBOW
45 DEGREE



S.S. CROSS

TESTING

VISUAL & DIMENSION INSPECTION

Inspection is carried out to detect any Dents, Surface Defect or Scratch on the surface tube. The Dimensional Inspection is carried out with calibrated measuring instruments for product dimensions are within tolerance requirements.

PMI TEST

Oxford Instruments make X-MET 5000 XRF analyser for PMI and Quality Control / Assurance

ULTRASONIC TEST

A high speed "Rotating Transducer" ultrasonic tube testing system operates in pulse-echo mode. Water immersion coupling is used for adequate and positive coupling of sound energy. A multi channel ultrasonic processing is used for detection and recording of volumetric defect in tubes in longitudinal and transverse direction.



THIRD PARTY INSPECTION

Parmar Steel can offer you material with inspection of any third party. Third party Inspection offers quality and thorough inspection for buyers.

The Inspection Agency can be nominated by client or we can arrange the third party inspection by various world class reputed agency like below....



Uhde India Ltd.



DET NORSKE VERITAS



Toyo Engineering India Ltd.



Nuclear Power Corp. of India Ltd.



I.B.R

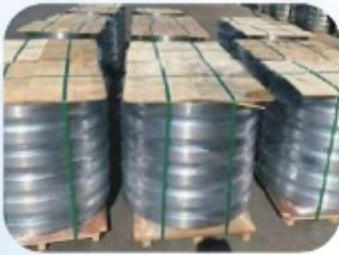




PARMAR STEEL

(AN ISO 9001 : 2015 CERTIFIED COMPANY)

PACKAGING & MATERIAL HANDLING



INDUSTRIES WE SERVE



- Oil & Gas
- Desalination
- Mineral & Mining Processing
- Subsea
- Energy
- Petrochemical
- LNG
- Nuclear
- Sugar Industries
- Power Plant
- Refinery Plant
- Shipbuilding
- Pharmaceutical
- Engineering
- Beverage Industries
- Paper & Pulp
- Steel & Power
- Cement Plant



PARMAR STEEL

(AN ISO 9001 : 2015 CERTIFIED COMPANY)

**MANUFACTURER & STOCKIST OF : STAINLESS STEEL,
CARBON STEEL, ALLOY STEEL, PIPE FITTINGS, FLANGES & FASTENERS.**

Manufacturer, Stockist & Suppliers of :

Stainless Steel, Carbon Steel, Alloy Steel, Pipes & Tubes,
Buttweld Fitting, Forged Fitting, Flanges, Fasteners, Sheet, Plates & Coils,
EN Series Rod, Valves and Ferrous & Non Ferrous Metals.

Corporate Office : (Mumbai)

48/50, Hingwala Building, Off. No. 8, 3rd Floor, C. P. Tank Road, Mumbai - 400 004.

Tel.: 022 6636 2812 / 99670 78222 **Email:** sales@parmarsteel.com


Factory :

Plot No. 239 / 241, Kolsa Bunder, Reay Road, Mumbai - 400 010.

Cell.: 082087 94743

Email: nareshmali@parmarsteel.com

Branches : Nashik * Pune * Haryana * Chennai

 www.parmarsteel.com

 www.parmarsteelalloys.com

